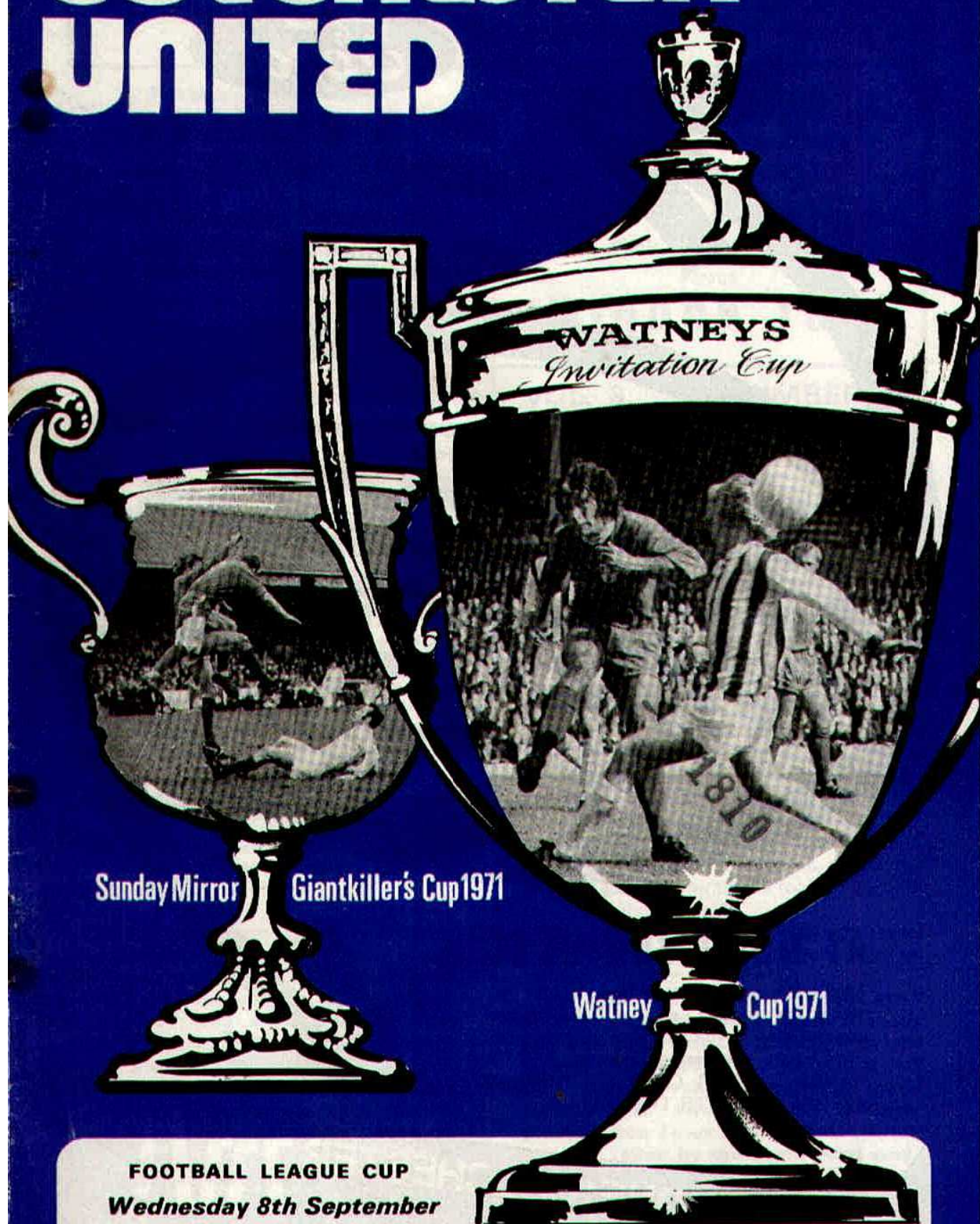


COLCHESTER UNITED



Sunday Mirror Giantkiller's Cup 1971

Watney Cup 1971

FOOTBALL LEAGUE CUP
Wednesday 8th September

v SWINDON TOWN



Ford

MAIN DEALERS

Full range of the fabulous Ford models
always in stock.

MALDON ROAD . COLCHESTER

Also at Ipswich Road, Colchester
and at Braintree and Clacton.

**ONLY MINUTES
FROM THE GROUND**

CANDOR MOTORS

**MALDON ROAD
AND DRURY ROAD
JUNCTION**

A1 USED VEHICLES

Ford's A1 scheme will ensure you get
value for money *and* a Ford-backed
guarantee! Try us first for very competi-
tive part exchange prices. SEE A
RANGE OF OUR CARS ON DISPLAY
BEFORE OR AFTER THE MATCH!

TELEPHONE: COLCHESTER 71171

COLCHESTER UNITED FOOTBALL CLUB LTD.

Telephone: COLCHESTER 74042

President: A. BUCK, M.P.

Chairman: R. G. R. Chapman

Directors:

G. A. E. Neville (*Vice-Chairman*)

E. Allen, J. W. Rippingale, R. Jackson

Manager: D. R. Graham

Secretary: D. R. Havell

Hon. Physician and Surgeon: Dr. Peter Snell

Trainer: D. Mochan

Commercial Manager: V. Keeble

Hon. Programme Editor: Bernard Webber

TONIGHT'S MATCH

**FOOTBALL LEAGUE CUP
SECOND ROUND**

WEDNESDAY, 8th SEPTEMBER, 1971

Kick-off 7.30 p.m.

versus

SWINDON TOWN

VOL. 3

NUMBER 4

TODAY'S VISITORS—pages 3, 6 and 7

PERSONALITY PAGE—page 10

Voice of Colchester

by the Editor

Never was a win more welcome than last Friday's 1-0 defeat of Southport coming as it did after successive away defeats at Bury and Newport. Lets hope a lot of confidence has been restored and that the injury snags are slowly removed. Dave Simmons has had the plaster removed from his ankle and could be back within a couple of weeks but while Graham Smith came back to goal on Friday, we had another rebuff at Newport with an injury to John Gilchrist.

One gratifying feature is the way our youngsters are coming along. Barry Smith's baptism to League football while ending in defeats, will have done him a power of good and Steve Leslie and Phil Bloss again showed on Friday they have considerable ability. Steve—he celebrated his 19th birthday on Saturday—had a hand in the winning goal while only the woodwork robbed Phil of a goal again in what was only his second League game at Layer Road—he scored on his debut against Barrow at the back end of last season.

With six of our first nine games away their remains plenty of room for further improvement, of course, and as the manager has said the real recipe is one of hard work.

Our rather disappointing start is all the more marked after the Watney Cup success but last season when we faced the similar problems of an away balanced start we had the same sort of initial results.

Then, after the first five League matches, we had five points with two wins, a draw and two defeats. Currently it's four points with two wins, three defeats.

Tonight, of course, its a break once more from the pressures of the League as we go hunting Cup glory yet again.

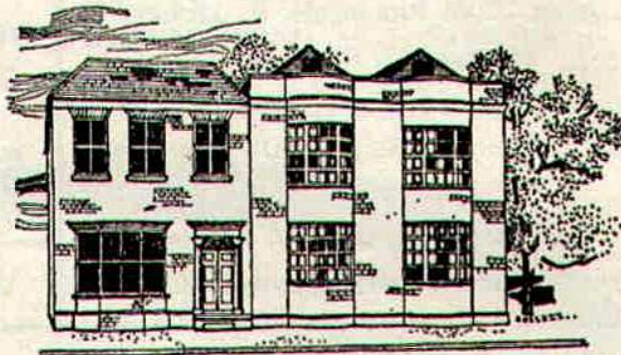
Swindon have made a modest start to the campaign under Dave Mackay but they are a fine footballing side and it will not be easy. Nevertheless our Cup record is really something. Leeds United and two Second Division sides, Luton Town and Carlisle United have all fallen by the Layer road way-side in less than a year so here's to another day of Cup glory.

TEAM LINE-UP — SEE CENTRE ▶

Always make it a 'HOME WIN' and buy your next home through us—there's a good reason!

DESMOND G. BOYDEN

PROPERTY CONSULTANTS
ESTATE AGENTS
SURVEYORS AND VALUERS



Balkerne House
55 CROUCH STREET
Colchester 79521 (3 lines)

BALKERNE HOUSE

We are an old-fashioned family business with a modern approach

OUR NEW PROGRAMME COVER . . .

Was designed by two local artists, Charles Debenham and Norman Warner, themselves two long-standing United supporters. They were also responsible for the cover design on last year's nationally acclaimed programme. Already having a design on the board, United's victory in the Watney Cup inevitably prompted last minute changes of plan. Directors and designers were unanimous in electing for a cover that paid tribute to the team's outstanding successes and that it should feature the two most richly deserved trophies that will grace the boardroom for the whole of the current season! Pictured in the cups are incidents from the two epic matches against Leeds United and West Bromwich Albion.

Harold Fleming (one for the old timers) Maurice Owen, Norman Uprichard, Don Rogers, Dave Mackay . . . all famous Swindon Town players all and Mackay, the latest in line having only arrived during the close season, is tonight's big name.

It's good to be rubbing shoulders with the Wiltshire club again. They now hold Second Division status and worthily so but of course, down the years we have had many stirring clashes with them in first the old Third Division (South) and then the Third Division.

Our first meeting, was by the way, only our second Football League game ever in 1950-51. We drew 1-1 at the County Ground and won 4-1 at Layer Road a few days later.

The last meetings were in 1967-68 when we collected three points also from a 1-1 draw there and a 2-1 home victory.

Swindon, bossed by Fred Ford, former Bristol City manager and a player pre-war with Charlton Athletic, have had outstanding success since the early 1960's. Third Division members since 1920 they eventually made the break through to Division Two in 1962-63 going up with champions Northampton Town.

Although back two seasons later, they remained a strong force and crowning glory came with their best season ever in 1968-69. What a campaign! They went up again as runners up to Watford and, for full measure, stunned the football world by winning the League Cup. That thrilling 3-1 win over Arsenal at Wembley was a triumph indeed for a club too long regarded as one of the unfashionables.

Of the side that lifted the Cup that day—several still remain and will be on duty tonight.

Under former manager, Alec Head, now in charge at Crystal Palace, several fine players matured to top stardom and the two most notable have been Mike Summerbee now with Manchester City, and Ernie Hunt (Coventry City).

Ford took over as manager in 1969 and in 1969-70 Swindon went very close to reach-

ing the First Division. Although ending up in fifth spot they were only three points away from runners up Blackpool.

Last season was, by contrast, a little disappointing and they finished 12th while hopes of further Cup glory faded when they went out to Fulham in the League Cup and Leeds United in the F.A. Cup 4-0 at Elland Road. Leeds next game was at Layer Road in the fifth round!

Mackay, reputed last season to be the highest paid player in the country, has been acquired to add further impetus towards a big promotion push. The start made however has been a modest one but there have been a few injury problems and these are of course early days.

BRIEF CLUB HISTORY

Swindon were founded in 1881 and joined the Southern League in 1894, Third Division status arriving in 1921. Main honours include the Football League Cup 1969, and runners up Division Three 1962-63 and 1968-69.

Their spacious County Ground holds over 29,000 and the record gate is 29,106 *versus* Watford, 1969.

OUR LAST MEETINGS

1967-68. (Third Division)

- **Saturday, 21st October, 1967:** United 2 (Blackwood, Price), Swindon Town 1 (Penman).

United: Adams; Mochan, Hall; Trevis, Forbes, Walker; Price, Bullock, McKechnie, Blackwood, Martin. Sub.: Barlow.

Swindon: Downsborough; Thomas, Trollope; Butler, Nurse, Harland; Heath, Penman, Terry, Smart, Rogers. Sub.: Giles. Gate: 4,907.

- **Saturday, 16th March, 1968:** Swindon Town 1 (Rogers), United 1 (Martin)

Swindon: Jones; Thomas, Trollope; Dawson, Nurse, Harland; Heath, Noble, Terry, Butler, Rogers.

United: Adams; Mochan, Hall; Trevis, Forbes, Loughton; Price, Bullock, Oliver, Martin, Blackwood.

Gate: 13,516.

ABC OF DIVISION FOUR

Coming up with ALDERSHOT's winner at Gillingham Roger Joslyn, no less—a fine shot on the turn.

BRENTFORD'S 6-0 whipping of Hartlepool was their biggest win for 14 years. Playing his 250th League game for them was John Docherty.

Ups and downs for CHESTER. Bernard Purdie their young striker scored four goals against Gillingham. Then at Aldershot defender Nigel Edwards was sent off.

Boardroom trouble at DARLINGTON. Two directors have resigned following the sacking of manager Len Richley.

Débuts for GILLINGHAM. Goalkeeper Peter Shearing their trainer coach, and former West Ham 'keeper, and Tommy Parmenter

just signed from Orient, made their initial appearances together.

Our visit to NEWPORT the other night drew a 4,168 crowd to Somerton Park—their best for 12 months.

NORTHAMPTON TOWN are hoping to sign former England Under 23 defender Lew Chatterley from Aston Villa.

When we bottled up SOUTHPORT'S Tony Field last Friday it was the first time he hadn't scored in six League and League Cup ties this season.

There have been welcome signs of freer scoring in the Division but it was a familiar pattern last Saturday with four goalless draws at BARROW, SCUNTHORPE, SOUTHEND and WORKINGTON.

WHERE WE ARE AND SWINDON'S LEAGUE POSITION

SECOND DIVISION

| | Home | | | Goals | | | Away | | | Goals | | | A Pts |
|--------------|----------|----------|----------|----------|----------|----------|----------|----------|----------|----------|----------|----------|-------|
| | P | W | D | L | F | A | W | D | L | F | A | | |
| Bpool | 6 | 3 | 0 | 0 | 8 | 1 | 1 | 0 | 2 | 3 | 3 | 8 | |
| Bris. C. | 5 | 2 | 1 | 0 | 7 | 4 | 1 | 1 | 0 | 6 | 2 | 8 | |
| Nwich | 5 | 2 | 1 | 0 | 4 | 1 | 0 | 2 | 0 | 1 | 1 | 7 | |
| Hull | 5 | 3 | 0 | 0 | 3 | 0 | 0 | 1 | 1 | 1 | 2 | 7 | |
| Millwall | 5 | 2 | 1 | 0 | 4 | 2 | 0 | 2 | 0 | 4 | 4 | 7 | |
| Q.P.R. | 5 | 1 | 1 | 0 | 4 | 1 | 1 | 1 | 1 | 5 | 3 | 6 | |
| Burnley | 5 | 1 | 1 | 0 | 3 | 2 | 1 | 1 | 1 | 6 | 5 | 6 | |
| Mbro. | 5 | 3 | 0 | 0 | 7 | 3 | 0 | 0 | 2 | 2 | 4 | 6 | |
| Preston | 5 | 2 | 0 | 1 | 4 | 3 | 0 | 2 | 0 | 1 | 1 | 6 | |
| Bham | 5 | 2 | 0 | 0 | 7 | 3 | 0 | 1 | 2 | 1 | 3 | 5 | |
| Orient | 5 | 1 | 1 | 0 | 4 | 1 | 0 | 2 | 1 | 1 | 3 | 5 | |
| Sland | 5 | 1 | 1 | 1 | 3 | 4 | 0 | 2 | 0 | 2 | 2 | 5 | |
| Pmouth | 5 | 2 | 0 | 1 | 4 | 4 | 0 | 1 | 1 | 2 | 4 | 5 | |
| Swdon | 5 | 1 | 1 | 0 | 2 | 1 | 0 | 2 | 1 | 1 | 4 | 5 | |
| Carlisle | 5 | 0 | 2 | 0 | 0 | 0 | 1 | 0 | 2 | 5 | 4 | 4 | |
| Oxford | 5 | 1 | 2 | 0 | 4 | 3 | 0 | 0 | 2 | 0 | 2 | 4 | |
| Chilton | 5 | 2 | 0 | 0 | 3 | 0 | 0 | 0 | 3 | 3 | 8 | 4 | |
| Luton | 5 | 0 | 2 | 0 | 2 | 2 | 0 | 2 | 1 | 2 | 3 | 4 | |
| Cardiff | 6 | 0 | 2 | 0 | 3 | 3 | 0 | 1 | 3 | 3 | 11 | 3 | |
| Fulham | 5 | 1 | 1 | 1 | 3 | 3 | 0 | 0 | 2 | 0 | 4 | 3 | |
| Watford | 5 | 0 | 3 | 0 | 3 | 3 | 0 | 0 | 2 | 0 | 5 | 3 | |
| S. Wed. | 5 | 0 | 1 | 1 | 2 | 6 | 0 | 0 | 3 | 1 | 6 | 1 | |

FOURTH DIVISION

| | Home | | | Goals | | | Away | | | Goals | | | A Pts |
|-----------------|----------|----------|----------|----------|----------|----------|----------|----------|----------|----------|----------|----------|-------|
| | P | W | D | L | F | A | W | D | L | F | A | | |
| Brntfrd | 5 | 2 | 1 | 0 | 11 | 1 | 1 | 1 | 0 | 2 | 0 | 8 | |
| Grimsby | 5 | 2 | 1 | 0 | 8 | 3 | 1 | 1 | 0 | 4 | 3 | 8 | |
| Reading | 5 | 2 | 0 | 0 | 3 | 0 | 2 | 0 | 1 | 4 | 4 | 8 | |
| Petrbr | 5 | 3 | 0 | 0 | 8 | 2 | 0 | 1 | 1 | 3 | 4 | 7 | |
| Scntpe | 5 | 1 | 1 | 0 | 2 | 1 | 2 | 0 | 1 | 6 | 6 | 7 | |
| Sthprt | 5 | 3 | 0 | 0 | 12 | 1 | 0 | 0 | 2 | 1 | 3 | 6 | |
| Wktgn | 5 | 1 | 2 | 0 | 2 | 0 | 0 | 2 | 0 | 3 | 3 | 6 | |
| Chester | 5 | 1 | 1 | 0 | 6 | 2 | 0 | 2 | 1 | 0 | 1 | 5 | |
| Aldrshot | 5 | 0 | 2 | 1 | 3 | 4 | 1 | 1 | 0 | 2 | 1 | 5 | |
| Nthptn | 5 | 0 | 1 | 0 | 1 | 1 | 1 | 2 | 1 | 3 | 6 | 5 | |
| Barrow | 5 | 1 | 1 | 1 | 2 | 2 | 1 | 0 | 1 | 1 | 4 | 5 | |
| Crewe | 5 | 2 | 0 | 1 | 6 | 4 | 0 | 0 | 2 | 3 | 5 | 4 | |
| Sthnd | 5 | 1 | 1 | 1 | 5 | 3 | 0 | 1 | 1 | 2 | 4 | 4 | |
| Lincoln | 5 | 2 | 0 | 0 | 5 | 1 | 0 | 0 | 3 | 4 | 9 | 4 | |
| Bury | 5 | 1 | 0 | 1 | 3 | 2 | 0 | 2 | 1 | 2 | 4 | 4 | |
| Gillham | 4 | 2 | 0 | 1 | 4 | 2 | 0 | 0 | 1 | 1 | 5 | 4 | |
| Nwprt | 5 | 1 | 2 | 0 | 4 | 3 | 0 | 0 | 2 | 3 | 7 | 4 | |
| Exeter | 5 | 1 | 0 | 1 | 6 | 6 | 0 | 2 | 1 | 1 | 5 | 4 | |
| Cam. U. | 5 | 1 | 1 | 0 | 4 | 3 | 0 | 1 | 2 | 2 | 7 | 4 | |
| Clichstr | 5 | 2 | 0 | 0 | 2 | 0 | 0 | 0 | 3 | 1 | 7 | 4 | |
| Stkprt | 5 | 1 | 1 | 1 | 6 | 5 | 0 | 0 | 2 | 3 | 7 | 3 | |
| Dncstr | 5 | 1 | 0 | 1 | 4 | 3 | 0 | 1 | 2 | 1 | 5 | 3 | |
| Hartipl | 5 | 1 | 1 | 1 | 7 | 6 | 0 | 0 | 2 | 0 | 7 | 3 | |
| Dingtn | 4 | 0 | 1 | 0 | 0 | 0 | 1 | 0 | 2 | 3 | 7 | 3 | |

TURF ACCOUNTANTS

Established 90 Years



J. J. BLAND & Co.
(COLCHESTER) LTD.

**Culver Chambers, Culver Street
COLCHESTER**

also at
**Bardfield Road, West Mersea
and
Collingwood Road, Witham**



*We offer you a complete racing service,
to open an account write—or phone*
COLCHESTER 7741 (all lines)



ESSEX TELEGRAPH PRESS LTD.

General Letterpress and
Offset Litho Printers

**Childwell Works, Magdalen Street,
Colchester, CO1 2JZ**

Telephone: 5611 (2 lines)

LEAGUE CUP IS HERE TO STAY

Cynics scoffed when the Football League Cup was introduced at the beginning of the 1960's. There was just not room for two major National Cup competitions they said and doubted the League Cup having the same appeal as the F.A. Cup. Well, after eleven seasons they have all been proved wrong.

From the first two legged final in 1960-61 won by Aston Villa, interest, crowds, cash have all grown. The final is now a 100,000 Wembley sell out.

It's all been a boon to the smaller clubs. Twice in 1966-67 when Queens Park Rangers beat West Bromwich Albion (don't remind Bobby Cram) and again in 1968-69 when tonight's visitors, Swindon Town unloading Arsenal 3-1, the Cup has gone to the Third Division.

One day Dick Graham has predicted a Fourth Division club will reach the F.A. Cup semi-finals and it might be that a Colchester, or a Brentford, or a Reading will win the Football League Cup final first. Rochdale, in 1961-62 got to the two legged final and lost on aggregate to Norwich City.

The competition has already been full of glamorous ties for the little clubs—Aldershot have had Manchester

United at their tiny Recreation Ground—and who can argue that it isn't all for the good of the game.

Swindon Town's crowning achievement was, of course, their 1968-69 triumph, the more so because in the past few years the competition has had to be taken seriously by the top brass clubs from finance and prestige.

Indeed, for Arsenal that 3-1 defeat was a bitter blow at a stage when they were striving to become a major force again. To reach Wembley Swindon had numerous replays and in fact including the two legged semi-final played in all eleven matches to attain the final stage!

So far our major contributions have been that memorable 4-1 win over Newcastle United in 1960-61 and another exciting slaying in 1963-64 when Fulham, then First Division and with Alan Mullery and Johnny Haynes, were shocked 5-3 here. That season we went on to beat Northampton Town 4-1 before going down to Workington in the fourth round 2-1.

Who knows now that we are in the exciting 1970's and Leeds United and the Watney Cup behind us, that this cannot be well exceeded?

B.W.

SWINDON TOWN PEN PICTURES

Peter Downsborough (Goalkeeper): Born Halifax. Signed in August 1965 from Halifax Town where he was a product of local football. Regular member of promotion winning side of season 1968-69, played in League Cup Final winning team 1968-69. Height 5ft. 10½ in. weight 13 stone 2lb.

Rod Thomas (Full back): Born Glyncorrwg. A former youth player with the club. Signed from Gloucester City in July 1964. Has gained Welsh Under 23 caps and full Welsh caps. Regular member of promotion winning side 1968-69. Played in League Cup Final winning team 1968-69. Height 6ft. weight 12 stone 10lb.

Joe Butler (Full back): Born Newcastle and came from Newcastle United in August 1965. Regular member of promotion winning side 1968-69. Played in League Cup Final winning team 1968-69. Height 5ft. 7½ in. weight 11 stone.

John Trollope (Left back): Born Swindon. A local player who joined the ground staff from school. He was selected for the first team at the beginning of the 1960-61 season when he was just 16, and was ever present

during that season. Regular member of promotion winning side of 1968-69 and played in League Cup Final winning team of 1968-69. Height 5ft. 10in. weight 11 stone 13lb.

Roger Smart (Right half or Inside forward): Born Swindon. Another local player who joined the club direct from Swindon schoolboys team. Regular member of promotion winning side of 1968-69 and played in League Cup Final winning team 1968-69. Height 5ft. 11½ in. weight 12 stone 1lb.

Frank Burrows (Centre half): Born Larkhall, Scotland. Came from Scunthorpe United for whom he played three seasons. Formerly with Raith Rovers. Regular member of promotion winning side 1968-69 and played in League Cup Final winning team 1968-69. Height 6ft. 1in. weight 12 stone 8lb.

Stan Harland (Left half): Born Liverpool. Came from Carlisle United in July 1966. Formerly with Everton and Bradford City. Regular member of promotion winning side 1968-69 and played in League Cup Final winning team of 1968-69. Height 6ft. weight 12 stone 5lb.

Don Rogers (Outside right or left): Born Paulton. Signed by Swindon when only 15 and quickly came to the fore. Gained many England Youth International caps and subsequently played in the England under 23 international team. Regular member of promotion winning side 1968-69 and played in League Cup Final winning team 1968-69. Height 5ft. 10in. weight 12 stone 10lb.

Peter Noble (Inside forward): Born Sunderland. Came from Newcastle in January 1968. Regular member of promotion winning side of 1968-69 and played in League Cup Final Winning team 1968-69. Height 5ft. 8in. weight 10 stone 10lb.

Arthur Horsfield (Inside forward): Born Newcastle. Came from Middlesborough whom he joined as a Youth International. Top goal scorer last season. Height 5ft. 11in. weight 12 stone 1lb.

Chris Porter (Outside left): Born Bridgewater. Signed from Bridgewater 1969. Height 5ft. 10½in. weight 11 stone 8lb.

REFEREES' COURSES

Last season the Colchester Referees' Society reached a record membership of 100. We are out to beat this total for the 1971-72 Season, with more Referees being required in the area. As a result, therefore, the following Referees Courses have been arranged.

- Wednesday, 22nd September, (7.30 p.m.) at the "Boys High School", Wellesley Road, Colchester.
- Wednesday, 22nd September, (7.15 p.m.) at the "Youth Centre", Green Lodge, Old Road, Clacton.

The recruitment and passing out of Referee candidates is one of the most important items within a Referees' Society.

Any person interested in taking up the "whistle" is requested to contact the Hon. Secretary of the Colchester Referees' Society: Mr. Ivor Ponder, 18 Beckingham Road, Tolleshunt D'Arcy, Maldon, Essex.



Back row (Left to right): R. Smart, P. Downsborough, R. Jones, D. Rogers.
 Middle row (Left to right): C. Jones, N. J. Trollope, F. Burrows, A. Horsfield, J. Butler, F. Ford
 (Team Manager).
 Front row (Left to right): R. Thomas, S. Peplow, D. Mackay, P. Noble, S. Harland.

HOME OR AWAY FOR YOUR 1972 HOLIDAY
 MAKE IT THE BEST EVER. Book through



G. POWELL & CO

7 Culver Street, Colchester. Tel: 77961

SUPI

COLCHESTER UNITED

Colours: Blue and White

- | | |
|----------------|-----------------|
| 1 Graham SMITH | 7 Brian LEWIS |
| 2 Micky COOK | 8 Brian OWEN |
| 3 Brian HALL | 9 Brian GIBBS |
| 4 Eric BURGESS | 10 Steve LESLIE |
| 5 Bobby CRAM | 11 Mick MAHON |
| 6 Phil BLOSS | 12 BRIAN GARVEY |

Linesman: G. F. KEEP (Catford) Red flag

Referee:

R. C. CHALLIS (Tonbridge)

Started refereeing in 1952 while serving with the R.A.F. in Singapore. After his return to England in 1953 he graduated through various Ken Leagues and was appointed to the Southern League Referees list in 1959. He was included on the Football League line in 1962 and promoted to referee six years later. In 1969-70 refereed the F.A. Challenge Trophy (Quarter Final).

Mr. Challis, a production officer on an industrial staff magazine, is married with two children both boys.

COLCHESTER EXPRESS

All the Week's News

FOR 2½p

Every Thursday

EVENING GAZETTE

GET THE ACTION

every evening Monday-Fri

First with the
 Sports News!

JOIN THE COLCHESTER UNITED SUPPORTERS' CLUB

APPLY:
SUPPORTERS' CLUB OFFICE · LAYER ROAD GROUND

Referee:
C. CHALLIS (Tonbridge)
Refereeing in 1952 while serving with the
Singapore. After his return to England
he graduated through various Kent
and was appointed to the Southern
Referees list in 1959. He was included
Football League line in 1962 and promo-
toree six years later. In 1969-70 refereed
Challenge Trophy (Quarter Final).
Challis, a production officer on an indus-
try magazine, is married with two children
and two boys.

COLCHESTER EXPRESS

the Week's News
FOR 2½p
every Thursday

SWINDON TOWN

Colours: Red and White

- | | |
|-------------------------|---------------------|
| 1 Peter DOWNSBOROUGH | 7 Chris PORTER |
| 2 Rod THOMAS | 8 Roger SMART |
| 3 John TROLLOPE | 9 Aurthur HORSFIELD |
| 4 Joe BUTLER | 10 Peter NOBLE |
| 5 Frank BURROWS | 11 Don ROGERS |
| 6 Stan HARLAND | 12 JONES |

Linesman: H. M. PREST (Belmont) Orange flag

THE ACTION
Evening Monday-Friday
Best with the
Sports News!

EVENING GAZETTE

PERSONALITY PAGE

SECOND CHANCE BURGESS

It's seldom a player gets a second chance in League football. Big Eric Burgess has though, and he reckons he owes it all to his pretty wife, Lisa, and manager Dick Graham.

Says Eric, "A series of circumstances including a troublesome knee injury and an attractive offer outside the game led me to pack soccer in. But Saturday afternoons at around 3 p.m. I still used to get the old tingle; my wife was very understanding when



Eric Burgess in dominant mood.

I tried to get back and as it turned out I couldn't have done better than write to Dick Graham for a trial. He's been of tremendous help too".

So it is that Burgess, born at Edgware, ex Watford, Torquay United and Plymouth Argyle is right back in the game he loves and to use his own words, "enjoying it as never before". It shows too.

Burgess, who might have gone to Lords groundstaff for his cricketing ability, first came to note playing for Middlesex Boys. Ron Burgess (no relation) the then Watford manager, spotted him and he joined the Vicarage Road staff alongside Brian Owen when 15½ and the pair served their apprenticeship together.

Guess where Burgess made his League debut? Yes, it was Layer Road when Watford, then in the promotion hunt, drew 1-1. The date, 31st March, 1964. "I remember it well" recalls Eric, "I had to mark Mike Grice. I've played against Brian Hall too in games for Torquay."

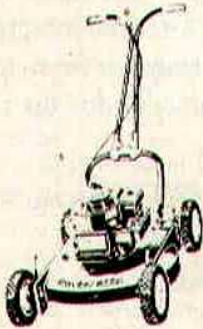
The move to Plainmoor came when Ken Furphy took over as boss and Burgess had three good years with the Devon club. Then he moved on to Plymouth and finally came the temporary break, short lived happily, for Colchester's gain has been considerable.

Burgess doesn't regret it either. Everyone at Layer Road has been tremendous; the team spirit is marvellous and even though I didn't play against Leeds United in the F.A. Cup tie, I, like everyone else, was made to feel all part of it."

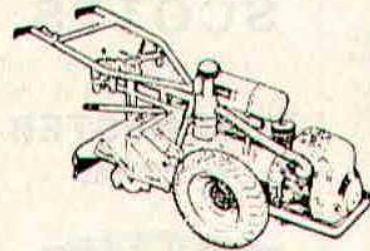
Eric played in eight League games at the back end of last season. During the summer he shed weight and hasn't looked back since. He was a major member of the Watney Cup squad—"that was my biggest thrill, in football"—and now as a middle member of the defence, events have turned full circle for him, for it was as a number five that he first played when a kid!

BERNARD WEBBER

**For all leading makes of
GARDEN MACHINERY**



ALCON PUMPS
ALLEN SCYTHES
BAROMIX CEMENT MIXERS
BOLENS TRACTORS
FLYMO GRASS CUTTERS
HAYTER MOWERS
HOMELITE CHAINSAWS
HONDA GENERATORS
HOWARD ROTAVATORS
HUGGAN IRRIGATION
MOUNTFIELD CULTIVATORS
RANSOMES MOWERS
SISIS LAWN EQUIPMENT
SUFFOLK LAWN MOWERS
TARPEN HEDGE CUTTERS
WEBB MOWERS
WOLSELEY MERRY TILLERS



EASTERN TRACTORS (COLCHESTER) LTD

COWDRAY AVENUE · COLCHESTER · Tel. 76111-4

**W. ALLEN & SON
BUTCHERS**



Wholesale and Retail

SPECIALISTS IN HOME-KILLED
MEAT

**ST. BOTOLPH'S STREET
COLCHESTER**

Tel: 73443 & 71579

SAVING WELL



*... with
added interest*

in the
**COLCHESTER
PERMANENT**

11 SIR ISAACS WALK
and 61 NORTH HILL
COLCHESTER
Telephone 73125

SELF DRIVE CAR HIRE

SAVE AGAIN AND AGAIN

at

**SCOTTS
OF
COLCHESTER**

Tel: 73185



P.S.—BOOK EARLY

We'll make your inside right

The Lion Buttery in Colchester is open from 7.30 a.m. to 10.30 p.m. on Saturdays, so we're well equipped to make your inside right after the match! And if you want to celebrate in style, we've private party facilities for up to 230 people.

So make your goal the Red Lion Hotel.

**The Lion Buttery at
Red Lion Hotel
High Street, Colchester
Telephone 77986**

TRUST HOUSE HOTELS
*A member of the
Trust Houses Forte Group*



**In one day we can make
your new car last five
years longer**

Ziebart will offer a five year or 100,000 mile guarantee against rust corrosion when your car has been treated by the revolutionary process of vehicle rust proofing.

For further details

Telephone Ardleigh 728



A DIVISION OF MOBILE TRANSPORT SERVICES LTD

Stockists of

Wolf Electric Tools
English Electric Motors
G.E.C./A.E.I. Motors and Control Gear
Max-Arc Welding Plant
Oxford Welding Plant
Oerlikon Electrodes

Services

Rewinds : Repairs : Maintenance
Breakdowns : Welding : Prefabricating

**POWER REWIND
& H. M. LTD.
WHITEHALL ROAD
COLCHESTER**

Tel: Colchester 71316/7 & 71166
Night (Emergency Colchester 5220/79704)

FOURTH DIVISION

| Date | Opponents | Ground | Score | | Scorers | Gate |
|----------|-----------------------|--------|-------|------|---------------------------|-------|
| | | | For | Agt. | | |
| 1971 | | | | | | |
| Aug. 14 | Lincoln City | Away | 0 | 2 | — | 6,607 |
| Aug. 18 | Brentford (L.C.1) | Home | 3 | 1 | Mahon, Lewis (2) (1 pen.) | 6,125 |
| Aug. 20 | Hartlepool | Home | 1 | 0 | Ashurst (o.g.) | 5,634 |
| Aug. 28 | Bury | Away | 0 | 3 | — | 2,557 |
| Aug. 31 | Newport County | Away | 1 | 2 | Lewis | 4,168 |
| Sept. 3 | Southport | Home | 1 | 0 | Mahon | 5,439 |
| Sept. 8 | Swindon Town (L.C.2) | Home | 4 | 1 | LEWIS(3)(PEN), MAHON | 7,437 |
| Sept. 11 | Darlington | Away | | | | |
| Sept. 17 | Crewe Alexandra | Home | | | | |
| Sept. 25 | Northampton Town | Away | | | | |
| Sept. 28 | Scunthorpe United | Away | | | | |
| Oct. 1 | Chester | Home | | | | |
| Oct. 6 | League Cup 3 | | | | | |
| Oct. 9 | Aldershot | Away | | | | |
| Oct. 15 | Lincoln City | Home | | | | |
| Oct. 18 | Southend United | Home | | | | |
| Oct. 23 | Cambridge United | Away | | | | |
| Oct. 27 | League Cup 4 | | | | | |
| Oct. 29 | Gillingham | Home | | | | |
| Nov. 6 | Barrow | Away | | | | |
| Nov. 13 | Brentford | Home | | | | |
| Nov. 17 | League Cup 5 | | | | | |
| Nov. 20 | F.A. Cup 1 | | | | | |
| Nov. 26 | Exeter City | Home | | | | |
| Dec. 3 | Stockport County | Away | | | | |
| Dec. 8 | League Cup Semi-Final | | | | | |
| Dec. 11 | F.A. Cup 2 | | | | | |
| Dec. 15 | League Cup Semi-Final | | | | | |
| Dec. 18 | Southport | Away | | | | |
| Dec. 27 | Peterborough United | Home | | | | |
| 1972 | | | | | | |
| Jan. 1 | Crewe Alexandra | Away | | | | |
| Jan. 8 | Bury | Home | | | | |
| Jan. 15 | Doncaster Rovers (3) | Away | | | | |
| Jan. 21 | Scunthorpe United | Home | | | | |
| Jan. 28 | Southend United | Away | | | | |
| Feb. 5 | Workington (4) | Away | | | | |
| Feb. 11 | Cambridge United | Home | | | | |
| Feb. 14 | Reading | Home | | | | |
| Feb. 19 | Gillingham | Away | | | | |
| Feb. 25 | Barrow (5) | Home | | | | |
| Mar. 4 | Brentford (LCF) | Away | | | | |
| Mar. 7 | Grimsby Town | Away | | | | |
| Mar. 11 | Aldershot | Home | | | | |
| Mar. 13 | Doncaster Rovers | Home | | | | |
| Mar. 18 | Hartlepool (6) | Away | | | | |
| Mar. 24 | Darlington | Home | | | | |
| Mar. 31 | Northampton Town | Home | | | | |
| Apr. 1 | Peterborough United | Away | | | | |
| Apr. 3 | Chester | Away | | | | |
| Apr. 7 | Workington | Home | | | | |
| Apr. 15 | Exeter City (S.F.) | Away | | | | |
| Apr. 17 | Grimsby Town | Home | | | | |
| Apr. 21 | Stockport County | Home | | | | |
| Apr. 24 | Newport County | Home | | | | |
| Apr. 29 | Reading | Away | | | | |
| May 6 | F.A. Cup Final | | | | | |

LONDON MID-WEEK LEAGUE AND CUP

| Date | Opponents | Ground | Score | | Scorers |
|-----------------------------------|--------------------------|--------|-------|------|-----------------------|
| | | | For | Agt. | |
| 1971 | | | | | |
| Aug. 25 | Aldershot | Home | 4 | 2 | Cook (2), Bloss, Hall |
| Sept. 22 | Charlton Athletic | Home | | | |
| Sept. 29 | Brighton and Hove Albion | Home | | | |
| Oct. 6 | Northampton Town | Home | | | |
| Oct. 20 | Watford | Home | | | |
| Nov. 2 | Luton Town | Away | | | |
| Nov. 10 | Cambridge United | Away | | | |
| Nov. 17 | Orient | Away | | | |
| Nov. 24 | Watford | Away | | | |
| Dec. 1 | Millwall | Home | | | |
| Dec. 8 | Millwall | Away | | | |
| Dec. 15 | Luton | Home | | | |
| 1972 | | | | | |
| Jan. 5 | Aldershot | Away | | | |
| Jan. 12 | Peterborough Utd. | Home | | | |
| Jan. 19 | Southend United | Away | | | |
| Feb. 2 | Southend Utd. | Home | | | |
| Feb. 16 | Orient | Home | | | |
| Feb. 29 | Charlton Athletic | Away | | | |
| Mar. 8 | Brighton and Hove Albion | Away | | | |
| Mar. 21 | Northampton Town | Away | | | |
| April 10 | Peterborough Utd. | Away | | | |
| LONDON MID-WEEK LEAGUE CUP | | | | | |
| Feb. 23 | Orient | Home | | | |
| Mar. 15 | Southend United | Home | | | |
| Mar. 29 | Orient | Away | | | |
| April 19 | Southend United | Away | | | |

SUPPORTERS' CLUB

I don't know if you had noticed, but the Supporters' Club flag is once more flying on match days, and, incidentally more cars than I have ever noticed before are displaying U's stickers of one sort or another. Keep it up (both flag and stickers!) it's all good publicity for the Club.

Incidentally, I think there is something quite important that we should watch. Fears have been expressed that the team may, after reaching such dizzy heights, become complacent. I don't think there is much chance of this, with such a bunch of nice, level-headed boys, to say nothing of Dick Graham's always down-to-earth policy. No, I think it is we, the supporters, who are more likely to take a tumble. After all, we have been fed on a diet of practically undiluted excitement, success and fame the whole of this year. There are times when we are bound to feel a bit of an anti-climax, and things don't go all our way.

It is then that people are likely to feel frustrated and annoyed and start complaining

So, let's watch it and give the team the same support in the ordinary, but so important, League games as we did in the Cup. I especially hope you Layer Road boys will lead the way in keeping the enthusiasm high and the cheers going. If you lead, others will follow, and the players react automatically. "You know it makes sense!"

F.R.

VICE-PRESIDENTS' CLUB

It is extremely likely that in the future a Steward will be at the entrance to the Oyster Room to check that only members and their one guest use the facilities of the club. To this end will all members please make certain that they have their membership cards with them for identification purposes.

May we please remind members and guests that under law children under the age of 14 are *not* allowed into the Oyster Room.

The Weekly Pontoon is starting soon so if you are interested in participating please contact Ted Mackley immediately.

BALL DONORS

Previous donors:

- v. Brentford: J. J. Bland and Co., Turf Accountants.
- v. Hartlepool: Mr. F. Cloughton, Felsted.
- v. Southport: James Abbott, Chartered Surveyors and Estate Agents, Colchester.

Donors for future matches:

- v. Crewe: Thomas Moy, Colchester.
- v. Chester: Mr. F. Wright, Layer-de-la-Haye.
- v. Lincoln: Garden Services, Kendall Road, Colchester.
- v. Southend: Mr. L. Gunary.
- v. Gillingham: D. G. Boyden, Estate Agents, Crouch Street, Colchester.
- v. Brentford: W. Allen and Son, St. Botolph's Street, Colchester.
- v. Exeter: Essex Telegraph Press Ltd.
- v. Peterborough: Fran, Rhonda, Rob and Mick, four supporters.

NEXT GAMES AT HOME

- **Friday, 17th September:**
UNITED v. CREWE
(League, Division Four) (kick-off 7.30 p.m.)
- **Wednesday, 22nd September:**
UNITED RESERVES v. CHARLTON ATHLETIC RESERVES
(London Mid-Week League) (kick-off 7.30 p.m.)

**DIVIDEND
STAMPS**
are so
Versatile!

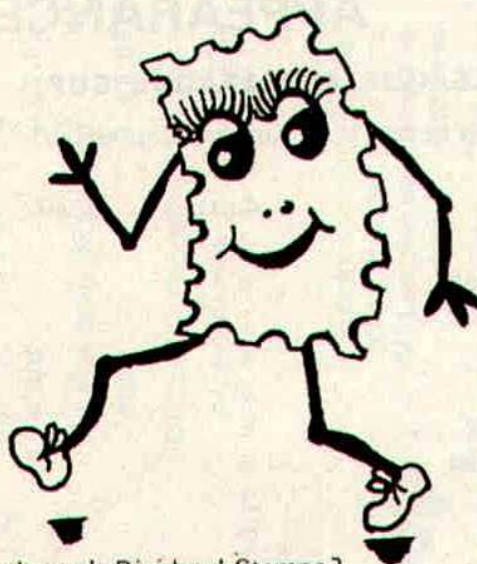


It's the versatility of Dividend Stamps that makes them so appealing to our customers. Not only can you exchange them for goods or cash, but you can also pay them into your Co-op bank account—with *extra* profits at the end of a year.

Why not sample the benefits available to *you* through Dividend Stamps? Come Co-operative Shopping today and watch your savings grow!



**COLCHESTER & EAST ESSEX
CO-OPERATIVE SOCIETY LTD.,**
Victoria Place, Eld Lane,
Colchester, CO1 1LR.



WHAT HAPPENED ?

A year ago: Wednesday, 9th September, 1970.

League Cup second round night and we come so close to evicting Second Division Birmingham City. Result 1-1.

Ken Jones snapped us ahead and such was our command that City were really struggling until Phil Summerill came up with an equaliser out of the blue.

In the City side was Trevor Hockey, now a leading light with current First Division leaders Sheffield United and sub. was wonder boy Trevor Francis. The gate was 8,095.

Five years ago: Saturday, 10th September, 1966.

In the Third Division we beat Bristol Rovers 3-1 before a 4,736 Layer Road gate and

were 13th in the table. Out scorers were Ken Hodgson, Reg Stratton with Roy Mabbutt putting through his own goal for the other.

We lined up: Buck; Forbes, Hall, Raine, Loughton, Trevis; Shires, Bullock, Hodgson, Stratton Martin.

Ten years ago: Saturday, 9th September, 1961.

We still led the way at the top of Division Four unbeaten for the seventh time in defeating Darlington 2-0 at Feethams.

Bobby Hunt and Martyn King were the scorers and King maintained his record of scoring in every game.

Out ream was: Ames; Millar, Fowler; Harris, Abrey, Hunt, R. M.; Foster, Hunt, R. R., King, Hill, Wright.

APPEARANCES AND SCORERS

LEAGUE AND LEAGUE CUP

(Up to and including 3rd September)

| | <i>Apps.</i> | <i>Goals</i> |
|-----------------|--------------|--------------|
| Bloss | 2 | |
| Burgess | 6 | |
| Cook | 1 | |
| Cram | 4 | |
| Gibbs | 6 | |
| Garvey | 5 | |
| Gilchrist | 5 | |
| Hall | 3 | |
| Jones | 3 | |
| Kurila | 3 | |
| Leslie | 2 | |
| Lewis | 6 | 3 |
| Mahon | 6 | 2 |
| Owen | 6 | |
| Simmons | 2 | |
| Smith, B. | 2 | |
| Smith, G. | 4 | |
| Own goals: one | | |

IN THE WATNEY CUP

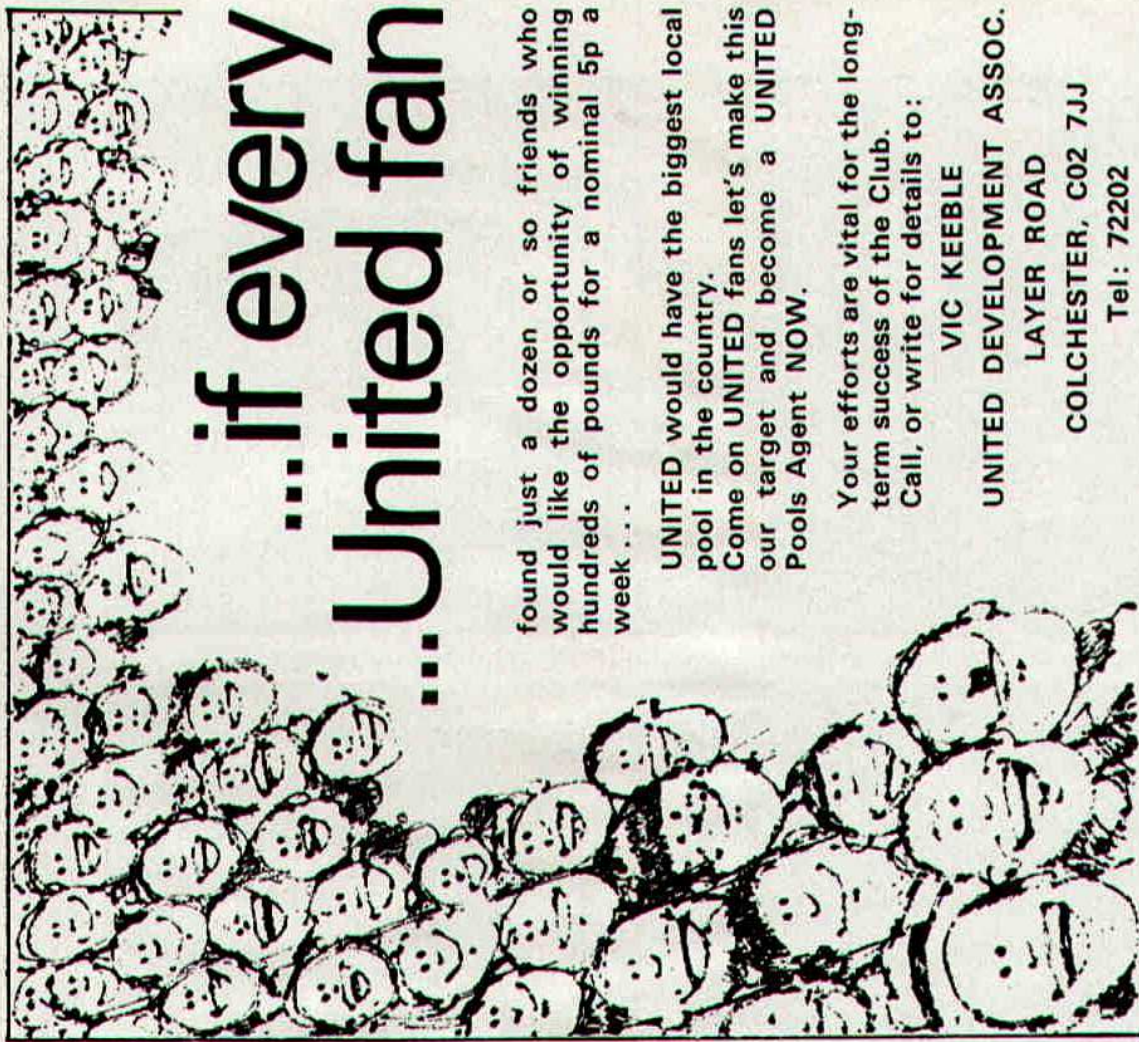
| | <i>Apps.</i> | <i>Goals</i> |
|-----------------|--------------|--------------|
| Bloss | 1 | |
| Burgess | 3 | |
| Cram | 3 | |
| Crawford | 1 | |
| Gibbs | 3 | 1 |
| Garvey | 3 | |
| Gilchrist | 3 | |
| Jones | 1 | |
| Lewis | 3 | 3 |
| Mahon | 3 | 2 |
| Owen | 3 | |
| Simmons | 3 | 1 |
| Smith, G. | 3 | |

shopstock

| | Cost | | Cost |
|--|-----------|--|-------|
| Official Club Badge .. | 25p | Pennants of all leading clubs .. | 23p |
| United "T" Shirts .. | 55p | Match programmes from all leading clubs | 5p |
| Scarves .. | 75p & 43p | Supporters' Club badges | 13p |
| United Ties with crest | £1.05 | Colchester Utd. badges | 25p |
| United Cuff Links .. | 75p | Coloured pictures of all star players .. | 18p |
| United Bobble Hats .. | 38p | Shoulder Bags, leading clubs .. | £1.55 |
| United gold plated Necklets (with crest) | 38p | Zip Holdalls (Man. Utd., etc.) .. | £1.93 |
| United Car Stickers .. | 10p | Official World Cup programmes .. | 30p |
| United Rosettes .. | 13p | | |
| United Pens (retractable) .. | 8p | | |
| United Individual Pictures of all players .. | 10p | | |

pop in the
club shop

Shop opening times:
Mon. to Sat., 9-5 p.m.
All League and Reserve matches



...if every
...United fan

found just a dozen or so friends who would like the opportunity of winning hundreds of pounds for a nominal 5p a week...

UNITED would have the biggest local pool in the country.
Come on UNITED fans let's make this our target and become a UNITED Pools Agent NOW.

Your efforts are vital for the long-term success of the Club.
Call, or write for details to:

VIC KEEBLE
UNITED DEVELOPMENT ASSOC.
LAYER ROAD
COLCHESTER, C02 7JJ
Tel: 72202

★BINGO ★SOCCER SPECIAL ★I.O.U's. Support the Competition
★MYSTERY BONUS ★STAR PRIZES that supports your team

BUY 5 STAR TICKETS £500 IN PRIZES
TO BE WON EVERY WEEK



ABOVE. The Haven Bar, Royal Hotel

BELOW. Main Restaurant, George Hotel



For a meal - a visit - a function or a conference

These four hotels in the Haven Group offer a complete service. Good food and comfortable accommodation for those guests and party facilities and help for those who are planning a function - whether to be a wedding, an annual dinner or a full scale business conference. Please one of our managers - they will be delighted to help and advise you.



Clacton-On-Sea
Royal Hotel,
Marine Parade,
Tel. 0255 21215

Colchester
George Hotel,
High Street,
Tel. 0206 78494

Grays
Stifford Lodge Hotel,
North Stifford,
Tel. 0375 71451

Witham
White Hart Hotel,
High Street,
Tel. Witham 2245

